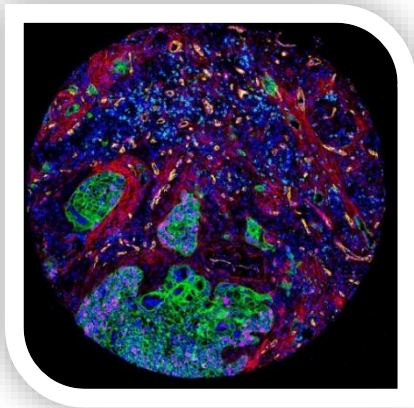


High-multiplex Immunostaining Services

ImaBiotech offers next level phenotype and biomarkers analyses with very High multiplexed immunohisto-staining (mIHC) services to deeply interrogate tissues and tumors at subcellular resolution while preserving the information in tissue architecture and cellular morphology. The platform includes the state-of-the-art Hyperion™ Imaging System (Imaging Mass Cytometry, Fluidigm Inc.).



Deep-profiling of the tissue heterogeneity and complexity

- Measure the impact of a drug or a disease to cell and tissue organization
- Translational Research to Phase 1&2
- GLP like environment
- IHC experts
- Proprietary Imaging Data Analysis

EFFICIENT WORKFLOW

Our core expertise is to transform tissues into quantitative data that we can use to answer complex research questions. Unsure which markers are right for your study?

Tell us about your study

- Sample types
- # of samples
- Species
- Study objectives

Select the marker panels with a team of expert

- Design a tailor customized panel to perfectly fit your needs

Optimize the conditions and run the study

- Assay optimization on the tissue of interest
- Quality control
- Data back-up and secure storage

Data output and analysis in 12 weeks

- Fast and easy to understand advanced statistical analysis (cell classification, spatial distance...)



1

DESIGN

panels using pathologist-verified Maxpar antibodies conjugated to metal tags.



2

STAIN

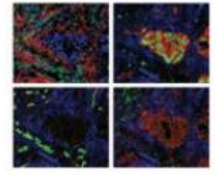
tissues (FFPE or frozen) or fixed cells using familiar IHC protocols.



3

IMAGE

protein markers at subcellular resolution using the Hyperion Imaging System.



4

ANALYZE

images in minutes using the MCD Viewer and easily export for secondary analysis.



Ask us to tailor a customized panel to perfectly fit your needs

APPLICATIONS

For a better understanding of drug efficacy, multiplex IHC is used in preclinical and clinical stages with various applications in many different therapeutic areas.

Preclinical

- Biomarker discovery and development
- Characterization of tissue microenvironment
- Pathway modulation
- Therapeutic response

Clinical

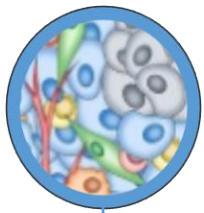
- Patient stratification
- Efficacy biomarker
- Drug safety and toxicity

Therapeutic Areas include Immuno-oncology, Oncology, Inflammatory & Autoimmune diseases

IMMUNE SIGNATURE

Immune cells CD45 *naive* CD45RA *memory* CD45RO

Stroma & Vasculature



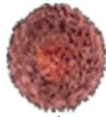
- Pan-keratin
- SMA
- PECAM
- Ki-67 *

T lymphocytes



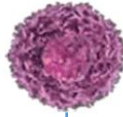
- CD3
- CD28
- CD69 *
- **T helper** CD4
 - **Treg** FoxP3
 - CD25 (IL-2R) *
- **T cytotoxic** CD8a
- Granzyme B *

B lymphocytes



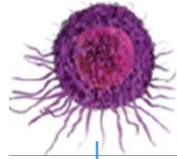
— CD20

NK cells



— CD16

Macrophages



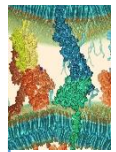
- CD68
- CD14
- CD11b
- HLA-DR

Neutrophils



— CD15

Immune checkpoints



- CD69
- CD279 (PD1)
- LAG3

* marker of activity/functionality

visit www.imabiotech.com

contact us at contacts@imabiotech.com

ImaBiotech Lille

152 rue Dr Yersin Loos 59120
FRANCE

ImaBiotech Boston

44 Manning road Billerica MA
01821 USA