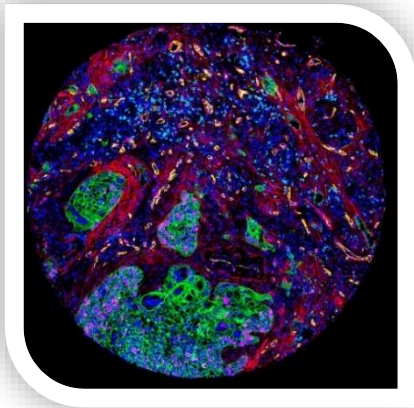


## High-multiplex Immunostaining Services

ImaBiotech offers next level phenotype and biomarkers analyses with very High multiplexed immunohisto-staining (mIHC) services to deeply interrogate tissues and tumors at subcellular resolution while preserving the information in tissue architecture and cellular morphology. The platform includes the state-of-the-art Hyperion™ Imaging System (Imaging Mass Cytometry, Fluidigm Inc.).



### Deep-profiling of the tissue heterogeneity and complexity

- Measure the impact of a drug or a disease to cell and tissue organization
- Translational Research to Phase 1&2
- GLP like environment
- IHC experts
- Proprietary Imaging Data Analysis

## EFFICIENT WORKFLOW

Our core expertise is to transform tissues into quantitative data that we can use to answer complex research questions. Unsure which markers are right for your study?

### Tell us about your study

- Sample types
- # of samples
- Species
- Study objectives

### Select the marker panels with a team of expert

- Design a tailor customized panel to perfectly fit your needs

### Optimize the conditions and run the study

- Assay optimization on the tissue of interest
- Quality control
- Data back-up and secure storage

### Data output and analysis in 12 weeks

- Fast and easy to understand advanced statistical analysis (cell classification, spatial distance...)



1

#### DESIGN

panels using pathologist-verified Maxpar antibodies conjugated to metal tags.



2

#### STAIN

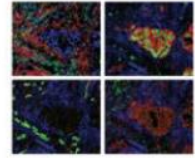
tissues (FFPE or frozen) or fixed cells using familiar IHC protocols.



3

#### IMAGE

protein markers at subcellular resolution using the Hyperion Imaging System.



4

#### ANALYZE

images in minutes using the MCD Viewer and easily export for secondary analysis.



Ask us to tailor a customized panel to perfectly fit your needs

## APPLICATIONS

For a better understanding of drug efficacy, multiplex IHC is used in preclinical and clinical stages with various applications in many different therapeutic areas.

### Preclinical

- Biomarker discovery and development
- Characterization of tissue microenvironment
- Pathway modulation
- Therapeutic response

### Clinical

- Patient stratification
- Efficacy biomarker
- Drug safety and toxicity

**Therapeutic Areas include Immuno-oncology, Oncology, Inflammatory & Autoimmune diseases**

visit [www.imabiotech.com](http://www.imabiotech.com)

contact us at [contacts@imabiotech.com](mailto:contacts@imabiotech.com)

ImaBiotech Lille

152 rue Dr Yersin Loos 59120  
FRANCE

ImaBiotech Boston

44 Manning road Billerica MA  
01821 USA