

QUARTERLY NEWSLETTER / APRIL 2021

IMABIOTECH IS IN THE SPATIAL REVOLUTION!

Dear Customers, Partners & Colleagues,

We hope that this April newsletter finds you well and we wish you and yours a safe year! We are very pleased to share with you our corporate quarterly newsletter, presenting our most recent announcements and what we did during the first quarter of 2021!

Hope you will enjoy the read and have a great day!

The ImaBiotech team

IN THE NEWS

THE FUTURE OF BIOLOGY IS SPATIAL!

Spatially resolved transcriptomics was named as the method of the year by Nature Methods for its capacity to fundamentally impact and dramatically advance the way scientists explore questions that are otherwise unanswerable. ImaBiotech, positioning itself at the latest frontier for leading-edge spatial multi-omics research, is bringing these value-added services to its customers that includes pathway modulation and phenotyping to better measure drug impact to cells and organs.

[Read More](#)

CORPORATE ANNOUNCEMENTS

NEW PATENTS AND STUDIES AT IMABIOTECH!

On February 18th 2021(Loos, France), we announced that ImaBiotech has been granted European and US patents for digital pathology and image analysis for Mass Spectrometry Imaging and Imaging Mass Cytometry. This technology allows to measure and quantify the distribution and organization of cell populations within tissue from highly multiplexed images in order to characterize disease progression in the context of drug efficacy evaluation.

[Learn more](#)

On March 1st 2021(Loos, France), we announced results of a preliminary retrospective study on the evaluation of the metabolic patterns according to tumor infiltrating lymphocytes (TILs) and discuss how immunomodulatory strategies could synergize immunotherapy to circumvent its current limitations.

[Download](#)

WEBINAR SERIES

IMALINK™ SIMPLIFIES DRUG DEVELOPMENT!

In 2021, we will host quarterly webinars presenting our CROs capabilities. Our webinar series also intends to present recent trends and tools to accelerate drug development in relation with our ImaLink™ single cell imaging platform.

During our last webinar in February 2021, Dr. Erika Pfaunmiller discussed the use of innovative services at

ImaBiotech to evaluate the drug PK/PD at the tissue level and quantify the biological target exposure at the site of action with the combination of complementary bioanalytical tools.

We are continuously working to bring you the most relevant information on innovative platforms to those seeking a greater understanding of tumor biology. We will host our next webinar soon, stay tuned for the announcement.

[Learn More](#)

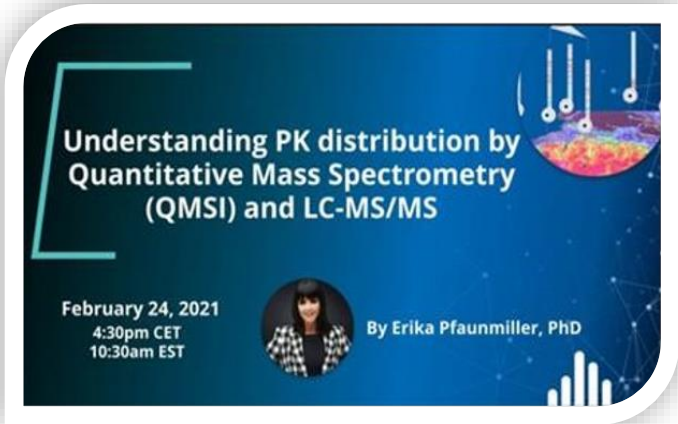


Fig 1: Understanding PK distribution by Quantitative Mass Spectrometry (QMSI) & LC-MS/MS

OUR SERVICES

FOCUS ON THE REVOLUTION IN SPATIAL BIOLOGY!

Full Transcriptome Spatial RNA Analysis: ImaBiotech announces in collaboration with Nanostring the launch of the GeoMx Whole Transcriptome Atlas (WTA) as part of its new offering with 18,000 genes.

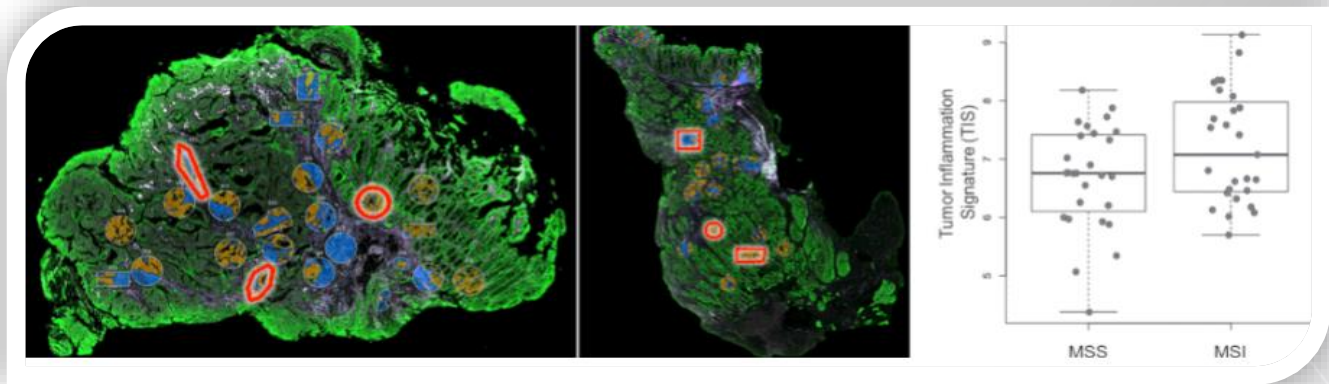


Fig 2: Whole transcriptome coverage with probes specific to protein coding mRNA sequences

Digital spatial profiling of RNA, protein Targets on a single tissue section:

Highly multiplexed RNA or protein detection - up to 800 targets in a single run.

- RNA or protein analysis from a single FFPE section.
- Morphological context - whole slide 4 color imaging to guide profiling and ROI selection.
- Maintains sample integrity - samples can be reused.
- Digital quantitation - up to 6 logs (base 10) dynamic range.
- High resolution - from 600-micron regions of interest down to single-cell analysis.
- High throughput: up to 20 samples per day.

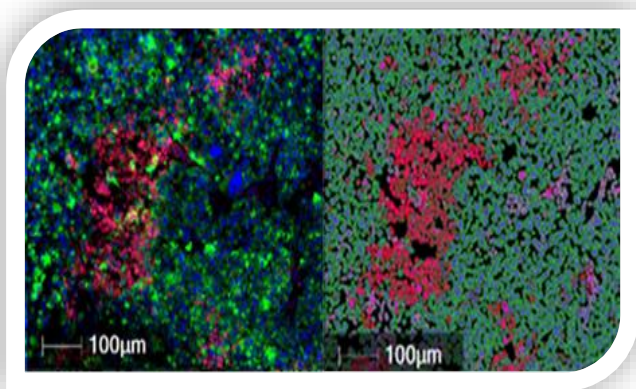


Fig 4: Cell positivity count

[Learn more](#)

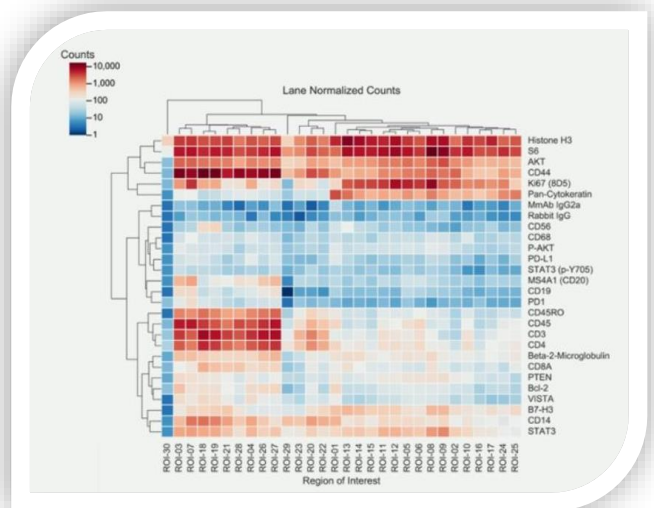


Fig 3: Heatmap showing differential protein expression within different ROIs

[Learn more](#)

Digital pathology services: Data Analysis
With Digital pathology and statistical tools, we recognize cells from images and retrieve the content of each cells made of lipids, proteins, mRNA and genes to decipher the complexity of diseases and drug response.

Our services include

- Cellular content quantification.
- Cell population classification.
- Cellular organization within tissue environment.
- Spatial analysis of cell interactions

INTERVIEWS

INTERVIEW WITH DR. JONATHAN STAUBER ImaBiotech Founder & CEO



How exciting is it to see that spatial biology was named Method of the year by Nature Method?

Really exciting! At ImaBiotech, we always believed that high-plex spatial biology has the potential to completely transform our molecular understanding of how tissues function and to help fully understand the clinical impact of tissue heterogeneity. The future is ripe for technical advances such as increased cellular resolution to enable single cell or subcellular resolution. Beyond the transcriptome, proteome and metabolome can also be spatially resolved, possibly combining these omics to get a true multiomics spatial approach in a single tissue section. There is a strong expectation that measuring genetic and phenotypic diversity will help to predict responsiveness to molecular targeted drugs and to facilitate patient selection in clinical trials.

What is your approach to success?

While adhering to demanding deadlines; our approach at ImaBiotech is to first invest time with our clients to understand their precise objectives and then provide tailored relevant solution to achieve them. We prefer to build long-term, trusted relationship with our commercial partners and add significant value to our work by adopting a “working with you” attitude rather than “working for you” attitude.

What are your current projects for the development of your business?

The aim is to demonstrate the relevance of our innovative approaches through clinical and technological validations. Despite the challenges due to the current pandemic crisis, many of our clients have pioneered innovative new therapies, especially in the promising field of immuno-oncology. Sponsors have made increasing demands on our services while regulatory requirements have become ever more rigorous. ImaBiotech is responding to this expectation by building team of highly skilled scientists and technicians, developing a culture of accuracy and QA compliance, and investing in the most advanced analytical technologies available.

What are your current projects for the development of your business?

The aim is to demonstrate the relevance of our innovative approaches through clinical and technological validations. Despite the challenges due to the current pandemic crisis, many of our clients have pioneered innovative new therapies, especially in the promising field of immuno-oncology. Sponsors have made increasing demands on our services while regulatory requirements have become ever more rigorous. ImaBiotech is responding to this expectation by building team of highly skilled scientists and technicians, developing a culture of accuracy and QA compliance, and investing in the most advanced analytical technologies available.

OTHER RESOURCES

STAY UPDATED WITH INFORMATIVE RESOURCES!

We offer online resources to help you gain insights on innovative spatially resolved technologies and services to accelerate drug development. Discover our latest marketing brochure presenting our CRO capabilities!

[Download Brochure](#)

For more information visit our website www.imabiotech.com

Or contact us at contacts@imabiotech.com

ImaBiotech France
152 rue Dr Yersin 59120
FRANCE

ImaBiotech USA
44 Manning Road Billerica MA 01821
USA