

HARNESSING THE POWER OF SINGLE CELL TISSUE IMAGING COMBINED WITH STANDARD BIOANALYTICAL SERVICES

INNOVATION IS OUR DNA

ImaBiotech is an international specialized Contract Research Organization, advancing the boundaries of the tissue and cells analysis to accelerate the drug development. With our ImaLink Imaging platform, a set of proprietary technologies, ImaBiotech offers unique capabilities to measure drug exposure and biomarker response at single cell level. With the associated team of expertise in drug discovery and development, the company deciphers the drug activity and response simultaneously, providing next level drug development services.

CREATING VALUE FROM TISSUE-BASED IMAGING

Specialized Contract Research Organization

- Our imaging solutions and services are based on ImaBiotech's tissue based imaging and proprietary Multimaging™ software solution for digital pathology

3 Core Expertise

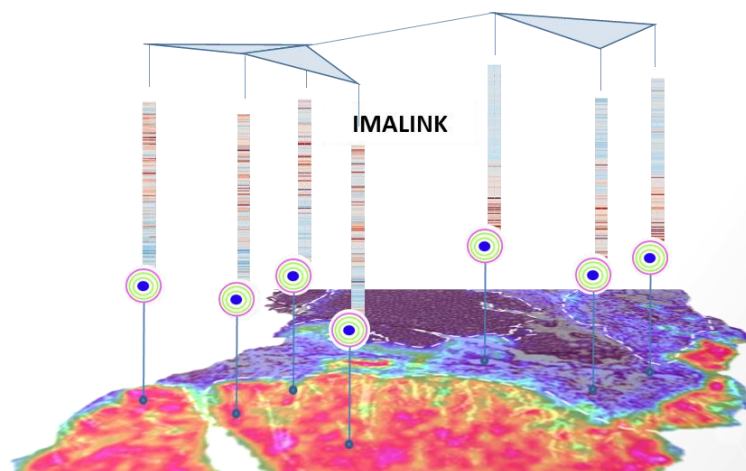
- Pharmacokinetics
- Pharmacology
- Advanced image and data analysis including digital pathology and A.I tech

6 Technology Pillars

- Imaging Mass Spectrometry
- Laser Capture Microdissection
- Multiplex Gene Expression Analysis
- Spatial Profiling of Gene Expression and Protein
- High Multiplex IHC
- Digital Pathology Image Analysis

ImaBiotech CRO services help deliver:

- More Meaningful Data
- Faster Go/No Go Decisions
- Patient stratification in clinical trials



The ImaBiotech Advantage

ImaBiotech has unmatched technology and expertise in drug development. Our talented and dedicated people keep pushing the boundaries of what our unique technologies can achieve.

When you work with us, you benefit from a small dedicated expert team who stays with you every step of the way throughout your study. We always remain flexible and adaptable to best serve your needs, be it offering transparency to your project and data, or proactive support.

Discover our services that allow to measure detailed potential of you drug by combining drug concentration and biomarker response at cellular level (gene expression, proteins, lipids, metabolites).

Our values

- Scientific rigor: The culture of evidence, the attention to detail and the need for safety are the foundations of our quality culture.
- Innovation: Our solution is a mix between science and the market's need. Our competitive edge is our adaptation to use innovative technologies and our scientific skills to meet our sponsor's expectations.
- Performance's recognition: A management mode centered on the evaluation of individual and collective results.
- Listening to the needs: Our company aims to ensure the ongoing improvement of our services to always satisfy our market.

FROM DRUG ACTIVITY TO DRUG RESPONSE

Plasma &
Spatial
tissue PK

Target
tissue
exposure

Biodistribution

Dose
Response

Tissue
Molecular
Heterogeneity

Data Analysis
&
Interpretation

Pathway
modulation

Microenvironment
phenotyping

Drug Activity

Biomarker Response

A WORLD CLASS PARTNER

2 Facilities

Lab and HQ in France, Lab in Boston USA

10 years+

Experience

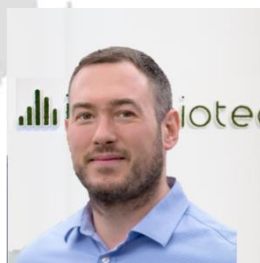
500+

Drug development projects

250+

Sponsors

Dedicated Experts



David Calligaris PhD.
PK & Mass Spec Imaging
specialist



Corinne Ramos, PhD.
Biomarker specialist



David Bonnel, PhD.
Small molecule, PK specialist



Mathieu Gaudin, PhD.
PK & MS specialist



Raphael Legouffe, MSc.
Histology, IHC specialist

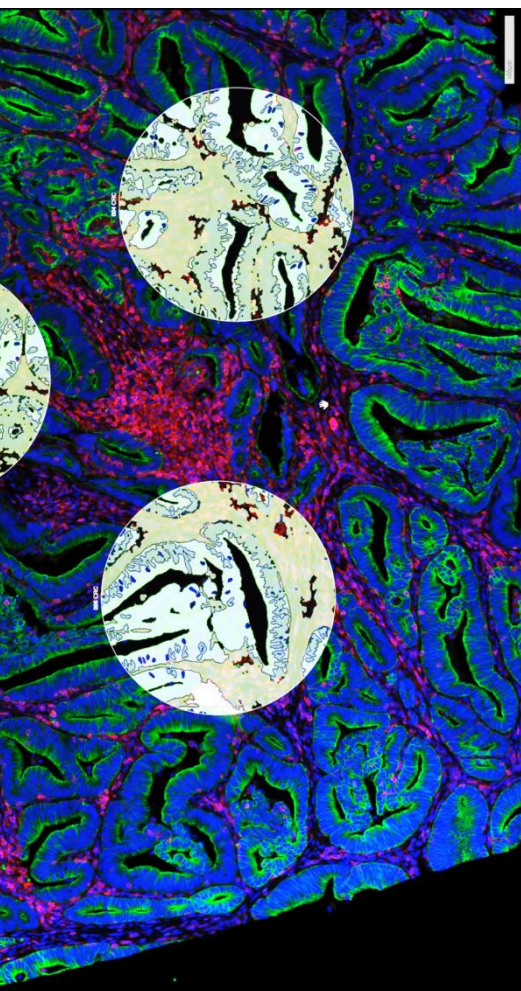


Fabien Pamelard
Data analysis specialist

A blend of sciences and innovative technologies to meet the sponsor's expectations


Innovative Technologies

- MALDI imaging and LA-ICP MS imaging
- High Multiplex IHC (Imaging Mass Cytometry - Hyperion Fluidigm)
- Spatial Gene expression (GeoMx Nanostring)
- Laser Capture Microdissection combined to Quantitative mass spectrometry
- LC/MS quantification



Multimaging™, our unique and proprietary imaging data analysis tool

ImaBiotech is at the heart of innovative imaging solutions to detect biomarkers and investigate the cell organizations and interactions in disease tissues. This technology quantifies the morphology information of each molecule from multiplex omics imaging and brings a new level of spatial information, i.e., tissue and cell organizations based on molecular signature. This allows to measure the precise impact of your drug to specific pathway modulation, reshaping of phenotypes, immune infiltration, inflammation status, etc...



End-to-end tissue microenvironment platform summarized in 4 points

Drug Centric

- Drug biodistribution and biodisponibility
- Dose selection
- Target tissue exposure
- Spatial PK

Signaling Pathway Centric

- Pathway modulation
- Drug response

Biological Pathway Centric

- Tissue molecular heterogeneity
- Functional analysis to drug response

Phenotypic Centric

- Microenvironment phenotyping
 - Patient stratification
- 

For more information visit our website www.imabiotech.com

Or contact us at contacts@imabiotech.com

ImaBiotech France
152 rue Dr Yersin 59120
FRANCE

ImaBiotech USA
44 Manning Road
Billerica MA 01821
USA

